



# BLOCK **BUILDER**

Construir & Remodelar  
Construction & Remodel

[blockbuilder.pt](http://blockbuilder.pt)





# Our services.



**1**

## **Architecture project**

Specialized project team of engineers and architects.

**2**

## **ICF Construction**

Innovative and sustainable homes. Modern design.

**3**

## **Renovation**

Indoor and outdoor areas, including painting services.

**Tailor-made and all-inclusive projects**

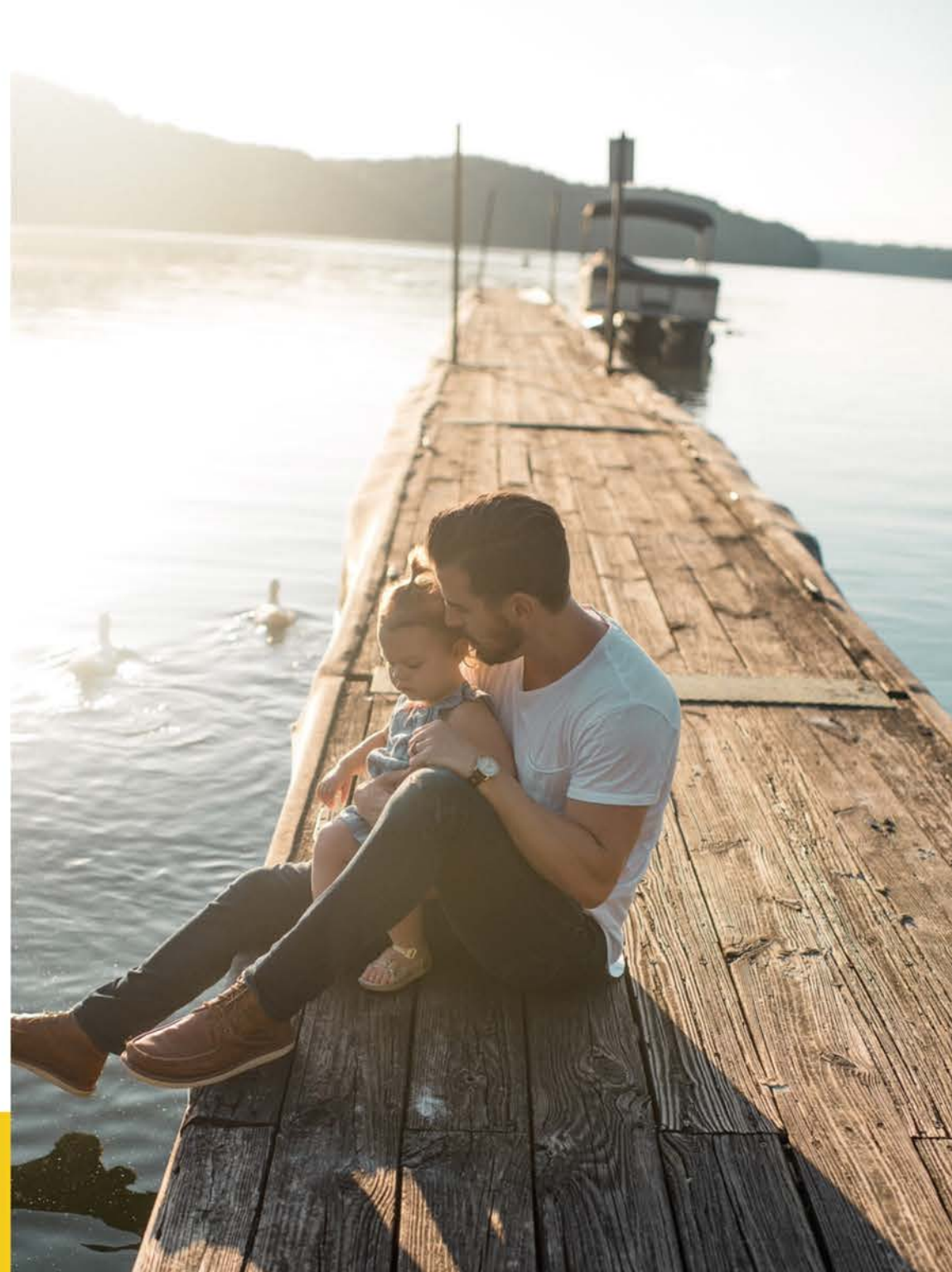


# Our Vision.

We believe in a sustainable future for our families, friends and society. Not only with reducing the eco-footprint with more efficient construction, but also using recycling materials and new methods.

Optimize energy consumption and using clean energy.

Also we are Passivhaus certified company that will make sure your house will be classified as A++ on energy evaluation.



## The managing-partners.

### Vitor Teixeira

More than 33 years of experience in urban, residential and industrial construction. It manages, supervises and executes in all works.

### Bruno Silvério

With more than 17 years of experience in management, marketing and communication of top companies in different industries. Last 10 years in development and Real Estate.

# What is ICF?



System made up of expanded polystyrene blocks that after assembly are filled with reinforced concrete, thus providing high thermal and acoustic insulation.

This ICF (INSULATED CONCRETE FORMS) system produces 3% of waste on site versus 26% for traditional construction, using up to 40% recycled material.

This system guarantees perfect watertightness and eliminates all thermal bridges, ensuring an ideal room temperature in winter, as in summer, thanks to the insulation.

CLEAN CONSTRUCTION.  
PASSIVE HOUSE  
CERTIFICATION.





# Reduced construction timing.

With the concrete insulating formwork block and insulation products, you have a total absence of thermal bridges on walls, floors, roofs, doors and windows.



**3% waste**  
na obra contra 26% da construção tradicional



# Advantages.

**40%**  
**recycled**  
**material**

## Confort



Homogeneous  
temperature Noise  
protection

## Sustainable



Significant reduction of  
CO2 emissions into the  
atmosphere

## Less energy consumption



Less than €1 per year per  
sqm in energy  
consumption

## Property value



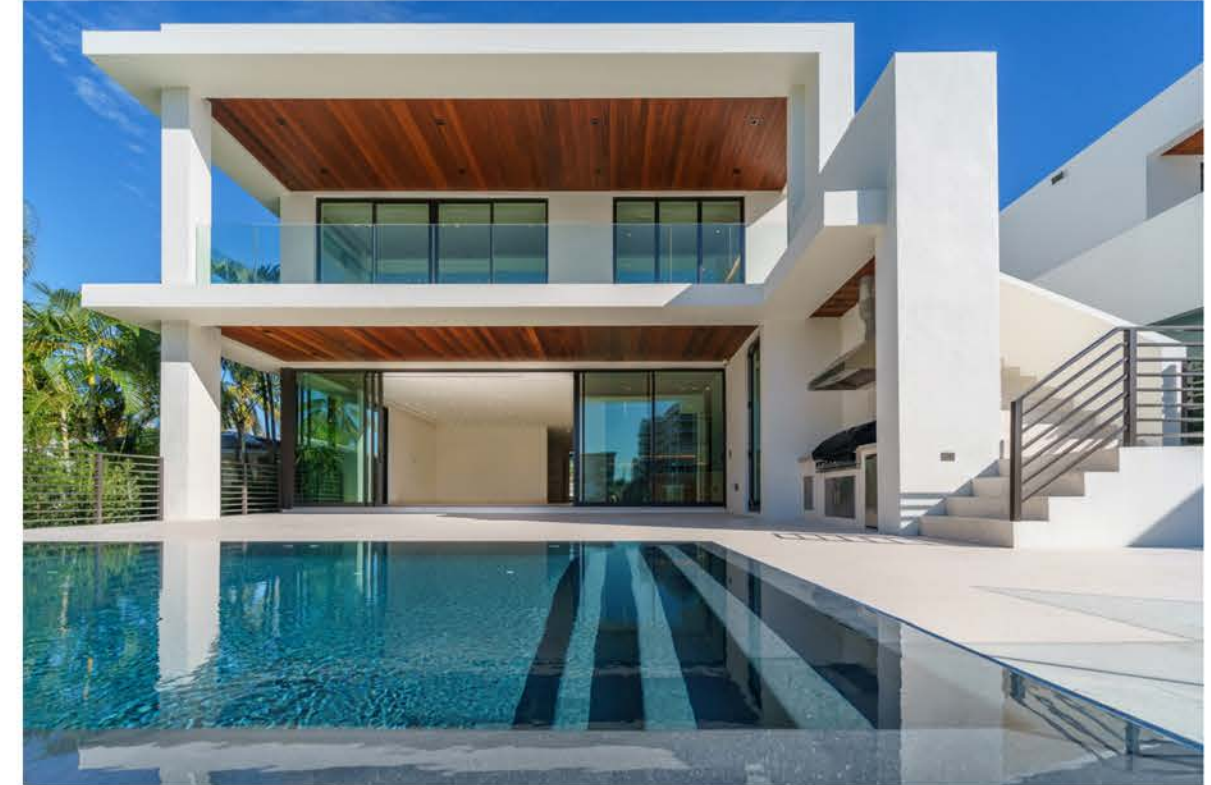
Exceptional standards  
and high heritage value



# All kind of houses and buildings.

Choose the type of house you want to built and ICF can be used in any architecture project.

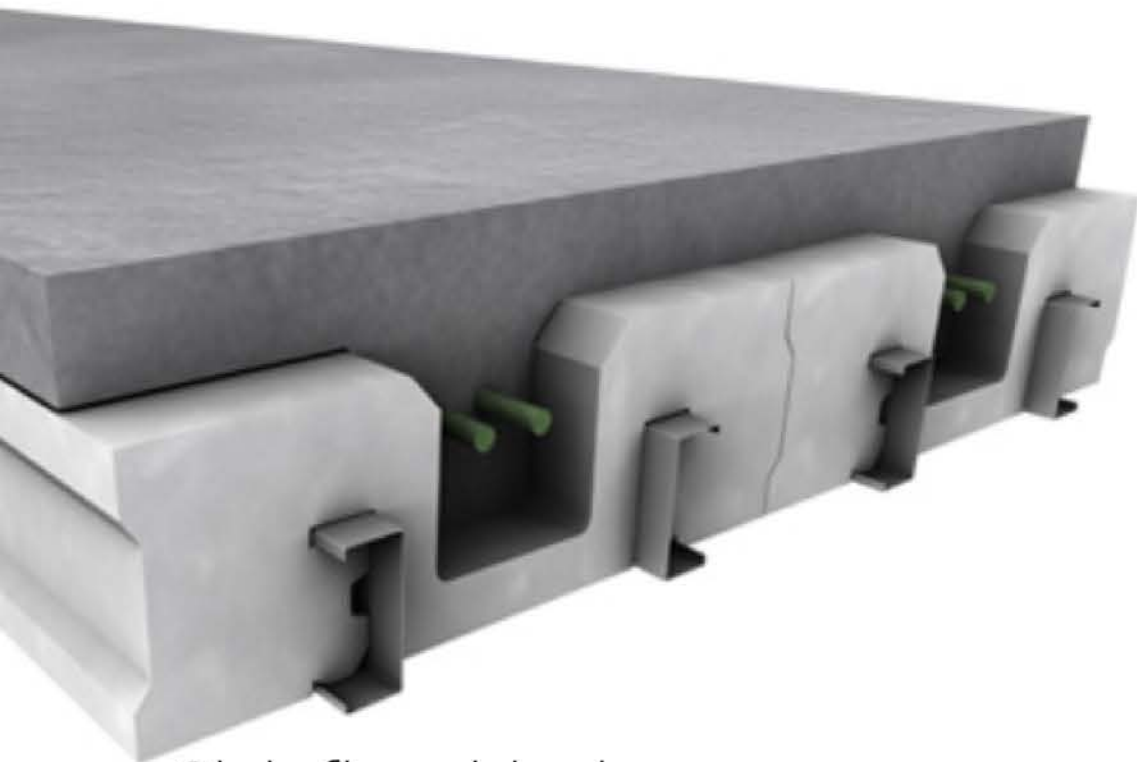
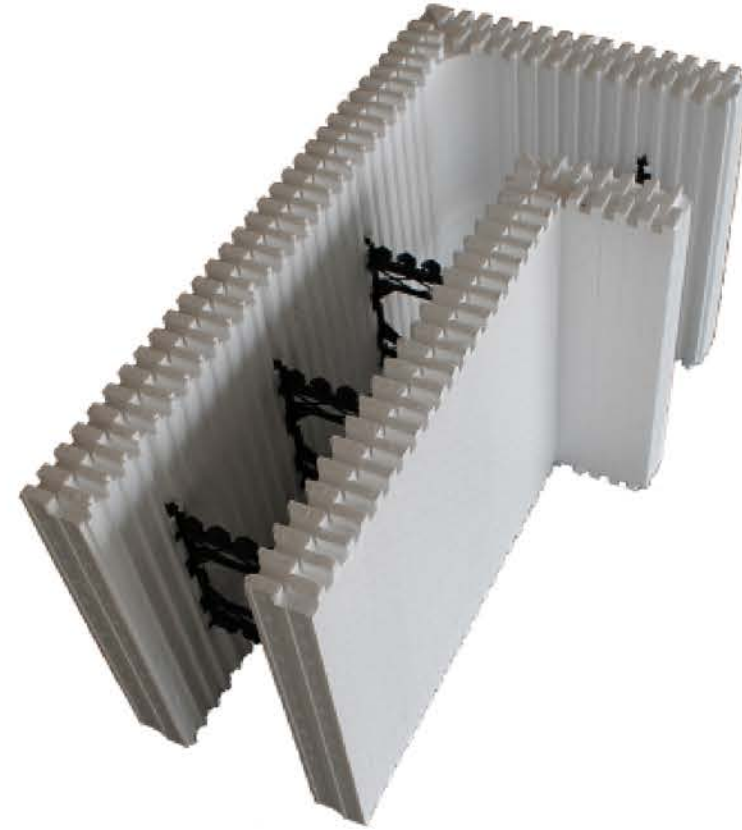
We also have Architecture services.





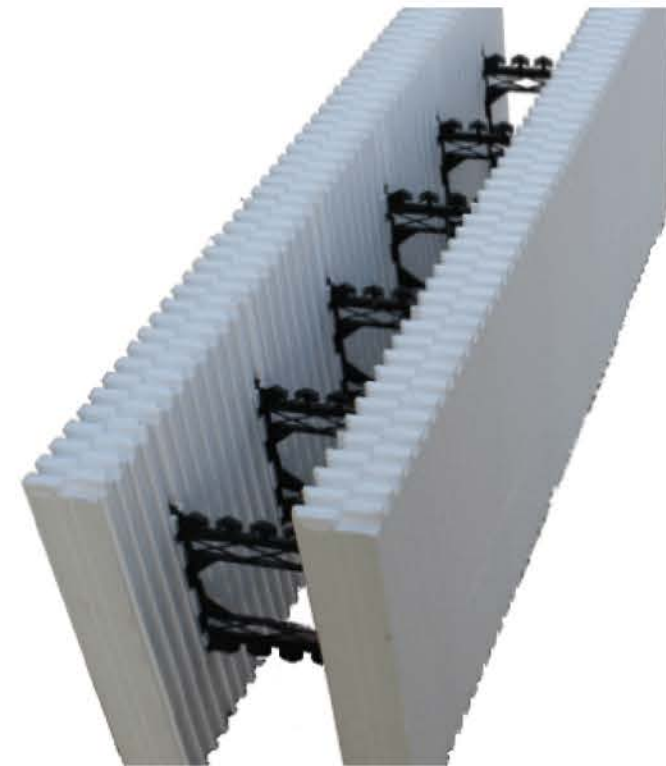
# ICF in detail

Corner block

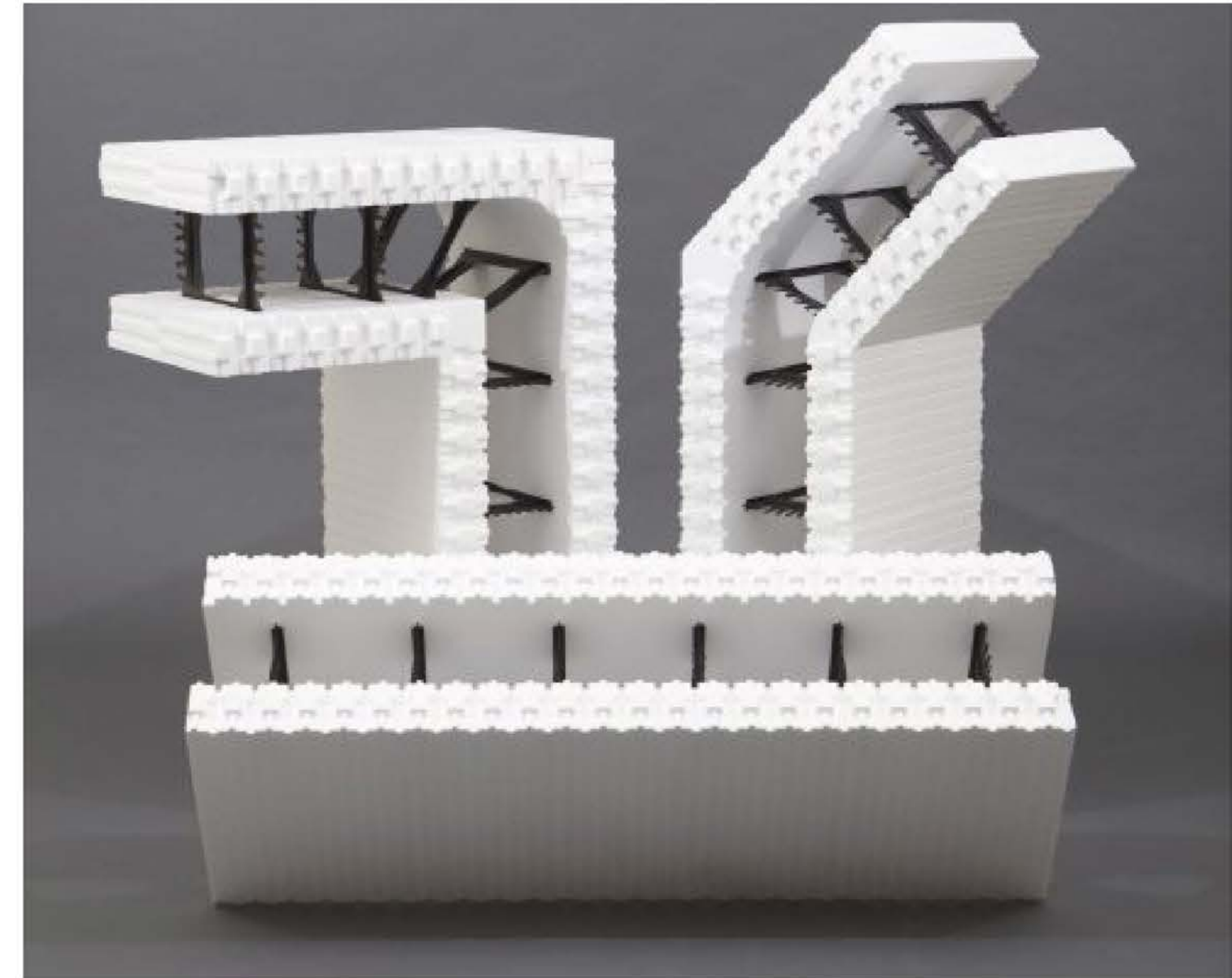


Slab floor blocks

Straight block



ICF blocks







# Thank you.

[blockbuilder.portugal@gmail.com](mailto:blockbuilder.portugal@gmail.com)

+351 961 215 567

+351 934 832 713



BLOCK  
**BUILDER**

Construir & Remodelar  
Construction & Remodel

